

**MAXIMIZING
THE POWER
POTENTIAL OF
GENERATOR
SETS FOR A
WORLD THAT'S
ALWAYS ON.**

LOAD CONTROL MODULE



ALWAYS ON

LOAD CONTROL MODULE FROM CUMMINS.

COST-EFFICIENT LOAD MANAGEMENT TO GET MORE FROM YOUR GENERATOR SETS.

The new Load Control Module (LCM) from Cummins is an independent load management controller that regulates loads on your standby generator sets to maximize their power potential – all via a smart and cost-effective package ideal for light commercial applications.

Built to support isolated bus topology and align easily with onboard paralleling breakers, the LCM uses generator set controls to meter and monitor your systems, letting you manage loads with ease and make optimum use of your generator sets, keeping you Always On.

FLEXIBLE CONTROL

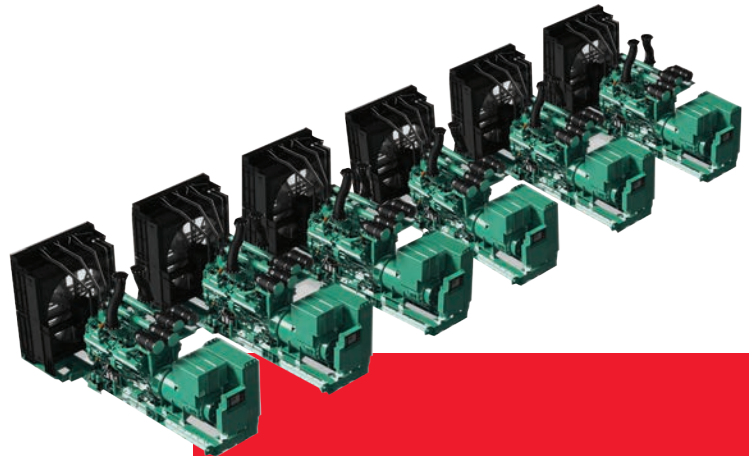
The LCM supports up to six generator sets fitted with a Cummins PCC 3300, PCC 2300, PCC 3100* or PCC 320X* controller. By automatically adding and shedding loads to an assigned priority order, the user-friendly system is key to keeping your standby generators performing to their maximum capacity.

RELIABLE AND EASY TO OPERATE

Along with international certifications and a 100% pre-engineered build, the LCM offers world-class reliability and quality, together with easy operation via an intuitive color touchscreen display, plus simple installation and straightforward servicing. The module is available as a wall-mounted enclosure or open-construction panel for more versatile installation.

POWERFUL SUPPORT

When you choose the LCM, you enlist all the quality and support of Cummins. With our rigorous standards and more than 3,000 generator set control projects successfully completed worldwide, you can be sure every Cummins product delivers exceptional performance. And with approximately 600 branch locations across the globe, our skilled support is ready where you need it.



FEATURES AT A GLANCE:

- Supports up to six generator sets
- Up to 12 loads with eight assignable priority levels
- Color touchscreen with real-time data views
- Event log and alarm history
- Generator set data monitoring
- Selectable kW/loads
- 0–50°C operating temperature and 95% RH
- 19 VDC–30 VDC operating voltage
- LED diagnostics for fast troubleshooting
- Certifications: UL 508
- Constructed to IEC 61439-1 and IEC 61439-2 standards

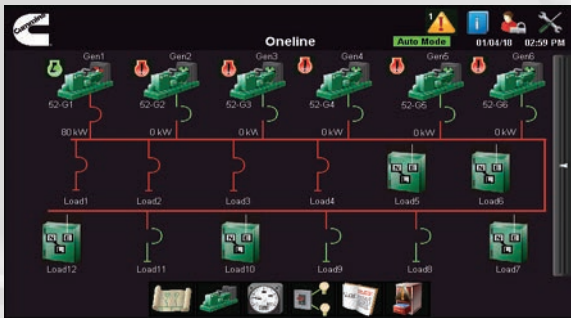
**Limited capacity for load demand*

FLEXIBLE FEATURES FOR EASY CONTROL

The LCM color touchscreen offers easily understandable system and generator set status overviews. Real-time information is clearly arranged for swift interpretation, while flexible controls allow users to quickly configure descriptors, adjust settings and perform functions.

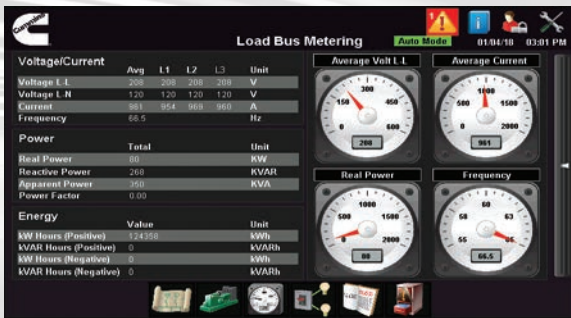
EVENT LOG AND ALARM HISTORY DISPLAYS

The LCM touchscreen also comes with an event log that tracks event dates, times and actions, plus an alarm history to facilitate detection of faults and assist troubleshooting.



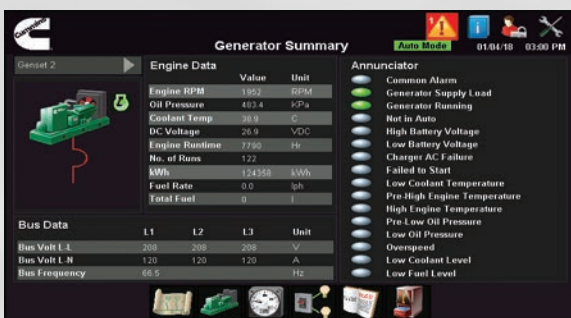
ONE LINE DIAGRAM

A real-time, at-a-glance overview of all system components monitored by the LCM, covering generator state, bus status, loads assigned to add/shed sequence, and other data. Changing colors, pop-ups, on-screen help and customizable device names are included for optimum operation.



BUS METERING

Provides a clear summary of AC metering data, including 3-phase voltage and current data, kW, frequency, and power factors for each bus. Numeric listings and traditional meter emulations convey the information in two formats for instantaneous interpretation and double-checking.



GENERATOR SET DATA

This display sets the LCM apart: delivering a deeper level of information that lets users view each generator set status. A dedicated screen for each generator displays critical operating parameters, including PCC generator annunciators, AC metering for bus and engine data.



PRIORITY-BASED LOAD ADD/SHED

Equips users to add and shed up to 12 loads in priority order, according to generator set capacity and to prevent generator set under-use or overload. Users can set add/shed priority for individual and groups of generator sets simply by touching the corresponding icons. Plus, you can configure generator set and load names for faster assessments of what's happening across your application.



cummins.com

Bulletin 5544016 Printed in U.S. Rev. 2/20
©2020 Cummins Inc.